

## GENERAL SPECIFICATIONS

LOA	9,78 m
Hull length	8,96 m
Beam	3.49 m
Light displacement	5.890 kg
Air draft	2,55 m
Draught	0,80 m
Fuel tank capacity	285L
Fresh water tank capacity	380L
Black water tank	170L + 170L
Maximum engine power	80,90kW/110hp



LOUNGE VERSION

## ARCHITECTS / DESIGNERS

Naval Architec – Vripack  
Exterior and interior design – Vripack  
Engineering – Delphia Yachts

## EC CERTIFICATION

- Category C – 8 people
- Category D – 10 people

## CONSTRUCTION

### HULL Standard

- "Pure" white gelcoat, RAL 9016
- "Pearl" green waterline stripes, RAL 6035
- GRP hand lay-up using with anti osmosis barrier incl. balsa core sandwich construction
- Structural hull counter moulding in monolithic laminate
- 2x hull portlights, acrylic glass
- Protective rubrail along the hull, black
- Bathing platform incl. boarding ladder

### DECK Standard

- "Pure" white gelcoat, RAL 9016
- GRP hand lay-up incl. balsa core sandwich construction
- Structural counter moulding in monolithic laminate
- Diamond tip type non-slip surface

### Options

- «Storm» grey hull, gelcoat (RAL 7004)
- «Steel» blue hull, gelcoat (RAL 5011)
- Composite steering wheel

## TRIM LEVEL AND PACKS

### “ESSENTIAL” TRIM LEVEL 2024, 230V/50HZ INCLUDES

- Anchor bow roller, stainless steel
- 2x midship cleats
- Mooring kit (4x mooring line incl. 6x fender)
- 1x additional service batteries, AGM, 95Ah
- Water heater, 40l
- Electric toilet, fresh water flush
- Indirect lighting in salon and cabins
- Courtesy lights in cockpit and catwalks
- USB sockets in salon and cabins
- Curtains in cabins
- Horn
- Shore power cable, 15m
- Cover for steering console

### “LOUNGE” TRIM LEVEL 2024, 230V/50Hz INCLUDES

- «Essential» trim level 2023
- 2x transom mooring cleats for cross docking
- 1.000W electric windlass
- Shore fresh water supply
- Hot & cold shower at transom
- Pleated shades in cabins (instead of curtains)
- Mosquito nets on portholes
- Navigation maps storage
- Storage sleeves in cabins
- 12V/230V, 2.000W inverter
- Single burner hob in wetbar
- Fusion MS-RA70N unit with bluetooth incl. 2x interior, 2x cockpit speakers
- Wireless phone charger at dashboard

### “INLAND” ELECTRONIC PACK 2024 INCLUDES

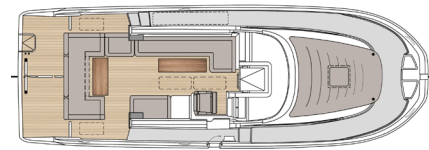
- Simrad RS20S VHF radio incl. antenna
- Simrad NSS EVO3 9” multifunction touchscreen display, at helm
- Simrad transducer

### “COASTAL” ELECTRONIC PACK 2024 INCLUDES

- Simrad RS20S VHF radio incl. antenna
- Simrad NSS EVO3 9” multifunction touchscreen display, at helm
- Simrad transducer
- Simrad autopilot

### BOW LOUNGE AREA PACK 2024

- Bow lounge cushion incl. 4x cup holders
- Bow lounge area awning, black incl. 2x poles and sockets



Main deck

## DECK EQUIPMENT

### SIDE DECKS

- Bulwark side gate on starboard side

### MOORING

#### Standard

- Anchor locker incl. pad eye for chain fixation
- 4 mooring cleats, stainless steel

#### Options

- Anchor bow roller, stainless steel
- 1.000W electric anchor windlass incl. remote control (only w/trim level)
- Bow sprit incl. telescopic boarding ladder
- 2x additional midship & transom mooring cleats

### SAFETY ON DECK

- Guardrail from midships to bow, stainless steel
- Transom gates, stainless steel

### COCKPIT

#### Standard

- Self bailing cockpit
- 1x large storage locker in cockpit bottom, lockable
- Cockpit bench incl. 2x storage lockers
- Gas bottle locker in cockpit bench (fitting 2x 2,75kg gas bottles)

#### Options

- Removable cockpit table
- Transom bike rack (2 bikes) incl. 230V socket in cockpit
- Folding cockpit bench backrest system
- Additional seat in cockpit
- Synthetic teak cockpit and partial catwalks to the stairs
- Synthetic teak in salon
- Synthetic teak bow catwalks
- Synthetic teak bathing platform

### WETBAR

#### Standard

- «Nero black» lid
- Moulded sink w/ foldable hot/cold maxer tap
- Front opening fridge, 49L
- Storage locker

#### Options

- Wetbar lid in 'Dolomite white» material
- 1 burner gas hob cooker, stainless steel
- Drawer fridge, 30L

## AMBIANCE

#### Standard

- Alpi Walnut interior woodwork
- Grey oak style floors
- Interior cushions fabrics: Drom «Sand»
- Worktop in composite «Nero Black» material

#### Options

- Interior cushions fabrics: Navy
- Interior cushions fabrics: Carbon
- Worktop surface «Dolomite white» for furniture in Walnut (instead of standard)
- Worktop surface «Dolomite white» for furniture in White Oak (instead of standard)

### SALON

#### Standard

- L-shape dining bench with storage space
- 2v 230V sockets

#### Options

- Foldable dining table incl. cup holders
- Indirect lights

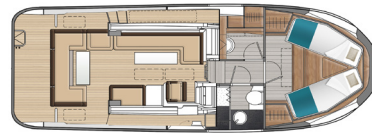
### STEERING STATION

#### Standard

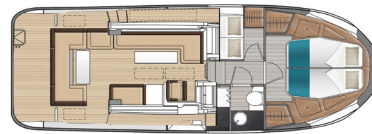
- Single-seater pilot seat
- Clear glass windscreen with aluminium frames, black
- Dashboard includes:
  - o Engine throttle control
  - o Engine instrumentation: rev counter, fuel gauge,
  - o Location for max. 9" display
  - o Compass
- Steering wheel
- Footrest

#### Options

- Bow thruster
- Navigation maps storage



Lower deck - 1 cabin / 1 head



Lower deck - 2 cabins / 1 head

### OWNER'S CABIN

#### Standard

- EU King size bed (2,00 x 1,60m)
- Mattress (thickness: 10cm)
- 2x storage lockers under the berth
- Storage on both sides of the berth
- 2x hanging lockers
- 1x large opening hatch
- 2x large hull portlights
- Padded side panels
- Overhead light, LED
- 1x 230V socket

#### Option

- 2x reading lights, LED
- Curtains
- Indirect light, LED
- Carpet

### BATHROOM

#### Standard

- Mirror
- Worktop in composite "Nero black" material
- Ceramic washbasin incl. hot/cold mixing tap
- Storage cupboard
- Manual toilet
- Acrylic glass shower separator
- Pull-out shower head
- 1x hull portlight
- 1x opening portlights in coachroof
- 2x Overhead light, LED
- 1x 230V socket

#### Option

- Indirect lights, LED
- Worktop surface «Dolomite white» in bathroom and wet-bar (instead of standard)

### OFFICE/UTILITY ROOM

#### Standard

- 1x hanging locker
- Desk
- 1x large hull portlight
- 1x opening portlight in coachroof
- 2x 230V sockets
- Overhead lights, LED

#### Options

- Curtains (option)
- 2x reading lights, LED
- Indirect lights, LED

### GUEST CABIN (OPTION)

#### Standard

- EU French size bed (2,00 x 1,20m)
- Mattress (thickness: 10cm)
- Storage space under the berth
- 1x hanging locker
- 1x shelf along the hull
- 1x large hull portlight
- 1x opening portlight in coachroof
- Overhead lights, LED
- 2x 230V sockets

#### Options

- Curtains
- 2x reading lights, LED
- Indirect lights, LED
- Carpet

## ENGINE

### Standard

- Shaft line propulsion
- Propeller
- Single diesel engine: Yanmar 4JH45 (33,10kW/45,00hp)
- Fuel filters
- Seawater filter
- Water separator
- Engine room soundproofed with high density foam
- Air intakes for engine hold cooling, on coachroof
- Fire extinguisher port
- Fuel tank deck filler
- Rotomoulded fuel tank, 285l
- Steering system: hung rudder, stainless steel
- Hydraulic steering
- Engine access hatch in salon floor
- Engine room light, LED

### Options

- Diesel - Yanmar 4JH57, 57hp/41,90kW
- Diesel - Yanmar 4JH110, 110hp/80,90kW

## ELECTRICITY

### Standard

- Multicolour 3,5" display (indicator of battery voltage, level gauges for fresh water, waste water, fuel, etc,..)
- Main electric switches, at dashboard
- 1x engine battery, AGM, 130Ah
- 2x service battery, AGM, 95Ah
- Battery charger, 230V/12V/40A
- Shore power socket, 230V/32A

### Options

- 2 bow & stern thruster system incl. battery bank, totalling 200Ah
- Ship-to-shore cable, 15m

## CONNECTIVITY

- Seanapps
- Mobile application for monitoring safety, navigation data, maintenance and comfort onboard

## COMFORT

### Options

- Diesel forced air heating incl. outlets in salon, cabins and windshield (not possible with electric propulsion)
- Air conditioning, totalling 20.000 BTU incl. outlets in salon and cabins
- Generator Fischer Panda, diesel (8.0kVA)
- Fans in salon and cabins

## PLUMBING

### Standard

- 1x manual bilge pump in cockpit, 30l/min
- 1x electric bilge pump, 50l/min
- 1x fresh water pump for pressuring hot/cold water system
- Water tank filler on port
- Rotomoulded fresh water tank, 380l
- Rotomoulded black water tank, 170l

### Options

- Rotomoulded grey water tank, 170l (option)
- Water heater, 40l working off engine exchanger and 230V

## GAS

- Gas locker for 2x 2,75kg EU gas bottles in cockpit bench
- Regulator and safety tap
- Gas leak detector

## MISCELLANEOUS

- Owner's manual
- Loading on truck
- Protective shrink wrap

## CONTACTS

[www.delphiayachts.com](http://www.delphiayachts.com)  
T +48 87 520 74 00  
[delphiayachts@delphiayachts.eu](mailto:delphiayachts@delphiayachts.eu)